

# MY LIFE; MY INJURY:

A focus on neurological injury and the actual impact of clinicians, from the point of injury to getting rehabilitation in place and beyond.



fieldfisher

**13th July 2017**

**One Great George Street  
Westminster  
London**

4.5 POINTS

**CPD**  
MEMBER  
The CPD Certification  
Service

Pending  
APIL  
Accreditation

**DELEGATE PACK**

Kindly sponsored by

**NeuroHealth**  
Case Management Services

Organised by

**ABI** Solutions

# fieldfisher MY LIFE; MY INJURY

**A focus on neurological injury and the actual impact of clinicians, from the point of injury to getting rehabilitation in place and beyond.**

Delegates will benefit from a series of presentations from the front line of those involved in the immediate and long term aftermath of a brain injury. This conference will analyse immediate trauma care, the decisions taken by neurosurgeons, the rehabilitation on the ward, the decisions about onward rehabilitation and getting back to the home environment.

The day will explore the more challenging scenarios faced by many clinicians in the immediate aftermath of an injury and relate in particular to the impact of litigation. It will seek to deal with the immediate difficult decisions that need to be taken by the legal team and the urgent steps that should be taken at the outset.

We will also explore the longer term aftermath; lives shattered and the consequences that follow. Areas covered will include involvement in drugs, alcohol, inappropriate spending or relationships and the management of family relationships when they have broken down.

**08:45 – 09:20**     **Registration**

**09:20 – 09:25**     **Sponsors welcome**

**09:25 – 09:30**     **Introduction from the Chair**

**Grahame Aldous QC, 9 Gough Square**

**09:30 – 10:15**     **The challenges of rehabilitation**

For over 20 years Jill has been involved in the management of high value rehabilitation packages, this very often being the key focus at the start of the claim. But how do we manage to put this in place and what are the key drivers that enable to rehabilitation to stay on track.

Jill will examine the first steps but will also look back at cases that settled some years ago and will be able to describe what happened post litigation.

**Jill Greenfield, Partner, Fieldfisher**

**10:15 – 11:15**     **Saving lives – An emergency response and after trauma care**

What actually happens when the call comes through and what to clinicians do to treat those seriously injured. What are the key drivers and problems faced in the NHS and what can be done to alleviate access to rehabilitation. Anne in particular will discuss the new and innovative "After Trauma Care" scheme put in place by the Royal London Hospital and which seeks to help those in most need to access rehabilitation.

**Dr Anne Weaver, Head of Trauma at Royal London Hospital**

**11:15 – 11:40**     **Tea/Coffee, Networking and Exhibition Stands**

**11:40 – 12:40**     **Surgical treatment of spinal injuries in the modern era**

Spinal injury outcomes vary from complete recovery to permanent disability with the patient painfully aware of their predicament. This session will the difference between success and failure. The current state and future direction of early treatment of spinal cord injury will be critically evaluated incorporating case studies from a large practice in spinal trauma.

**Dr Matthew Crocker, Consultant Neurosurgeon & Clinical Lead for Neurosurgery, St Georges University Hospitals NHS Trust**

**12:40 – 13:40 Lunch, Networking and Exhibition Stands**

**13:40 – 14:40 Traumatic brain injury and the world**

Traumatic Brain Injury (TBI) is often subject to a specialism-oriented perspective that does not always give a full consideration to the impact of the TBI upon life in 'the real world'. This presentation will consider the psychological, social, biological and behavioural consequence of traumatic brain injury from the point of view of a general psychiatrist. It will provide an account of common manifestations of TBI in regard of insight, mood, motivation and coping strategies at the level of the individual, as well as interpersonal, occupational and family issues at the level of the person's social network. It will explore how pre-injury personality and severity of TBI can influence the clinical picture. It will provide examples of such cases and suggest approaches for the most difficult of cases.

**Dr Mark Salter, Consultant Psychiatrist, East London Foundation NHS Trust**

**14:40 – 15:00 Tea/Coffee, Networking and Exhibition Stands**

**15:00 – 15:45 Putting the Claimant's House in Order**

Housing is often a core need for any Claimant. A recent change in the discount rate has led to a change in the way that cases are calculated. This has led to the High Court recently refusing to award any sum toward the capital cost of housing. How does an injury victim secure housing in the light of these changes? Henry Witcomb QC will speak about the various options and the current conundrum. He will discuss the various options open to victims and suggest solutions to what is the most fundamental of needs for many victims of injury.

**Henry Whitcomb QC, One Crown Row**

**15:45 – 16:35 Funding immediate needs and interim payments**

This presentation will discuss accessing funds from the Defence and why this is so important. Interim payment applications can be difficult especially when housing needs are significant.

How does this later translate into a settlement? What in reality does the legal team need from the rehabilitation team to be able to get the right amount of money for that victim.

**Elizabeth-Anne Gumbel QC, One Crown Office Row**

**16.35 – 16.40 Close**

**16.40 Onwards Drinks reception hosted by Fieldfisher**

4.5 POINTS

Kindly sponsored by

**NeuroHealth**  
Case Management Services

**CPD**  
MEMBER  
The CPD Certification  
Service  
© 2013 CPD

Pending  
APIL  
Accreditation



**Grahame Aldous QC**  
**9 Gough Square**

Grahame is recommended as a leader in his field for both Personal Injury and Clinical Negligence in Legal 500 and Chambers & Partners, who have described him as:

“one of the most approachable barristers and really understands what being a modern silk is all about. Attentive to the needs of both solicitor and client, he understands client care whilst also being a pedigree performer in court who is known for his fearsome cross-examinations”.

His publications include the APIL Guide to Catastrophic Injury Claims and Kemp & Kemp. He has chaired the PNBA Clinical Negligence Conference, been Head of Chambers at 9 Gough Square and Vice-Chair of the Bar Council Equality and Diversity Committee. He is a Fellow of APIL and also sits as a Recorder and lectures for the Judicial College, is a Governing Master of the Bench at Inner Temple, a CEDR Lead Mediator, and an ATC Advanced Advocacy Trainer.

You can read Grahame’s response to the MOJ Consultation of the Personal Injury Discount Rate at: [www.9goughsquare.co.uk/news/1308](http://www.9goughsquare.co.uk/news/1308)



**Jill Greenfield**  
**Partner, Fieldfisher**

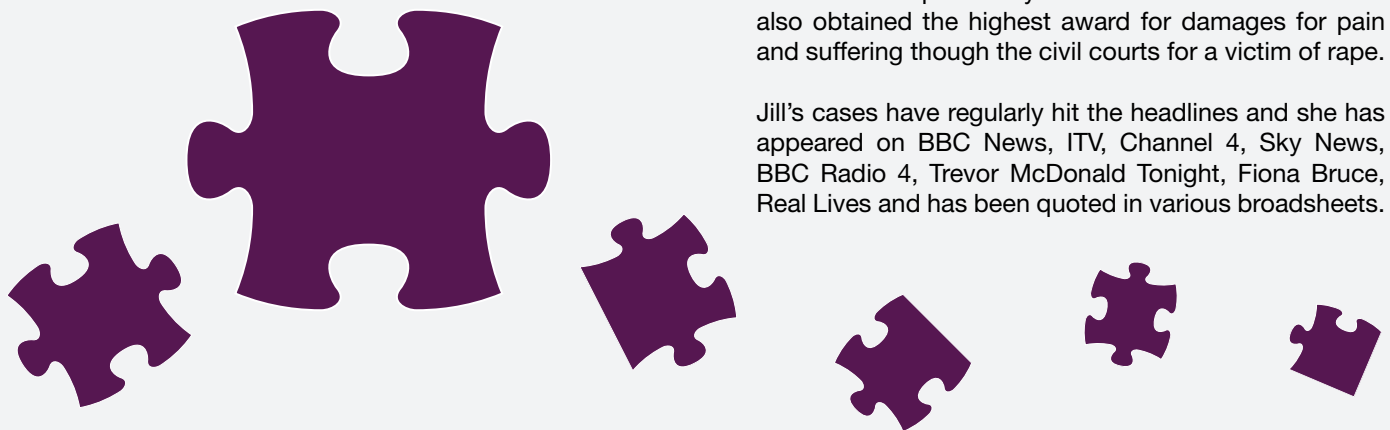
Jill is a partner at London law firm Fieldfisher and heads up the specialist catastrophic personal injury unit.

Jill is recognised by Headway and the Spinal Injuries Association as a Specialist Injury Lawyer. In the legal directories (Chambers/Legal 500) she is recognised as a leader in the field. Jill is also a member of the Association of Personal Injury lawyers (APIL) and is a committee member of Headway North London.

She is committed to achieving excellent results for her clients, ensuring the right type of essential care and support is provided; rehabilitation is a real focus. Her cases are generally worth several million pounds and are usually the result of road traffic accidents, occupiers liability claims or accidents at work. She is currently the lead solicitor in the 2009 Godstone Farm outbreak, acting for over 30 children who were exposed to E Coli 0157, some of which now suffer lifelong risks of renal failure.

Alongside her main practice she has a successfully campaigned for victims of terrorist atrocities such as Sharm-el Sheik, Kusadasi, Bali and Mumbai. She was one of the key lawyers who persuaded the Government to introduce a Scheme to Support British Victims of Terrorism abroad, providing financial support for such victims where previously none had been available. She also obtained the highest award for damages for pain and suffering through the civil courts for a victim of rape.

Jill’s cases have regularly hit the headlines and she has appeared on BBC News, ITV, Channel 4, Sky News, BBC Radio 4, Trevor McDonald Tonight, Fiona Bruce, Real Lives and has been quoted in various broadsheets.



4.5 POINTS



**Dr Anne Weaver**  
**Head of Trauma at Royal London Hospital**  
**Europe's largest Trauma Ward**

Dr Anne Weaver is a Consultant at London's Air Ambulance. In 2004, she became the first female Consultant in Emergency Medicine and Pre-hospital Care in the UK. Anne has years of experience in pre-hospital care spanning the UK and Australia. In 2007 she became Lead Clinician for London's Air Ambulance and co-founded the first Pre-hospital Care Programme in the UK for medical students. She organises mentoring of the undergraduate medical students by London's Air Ambulance doctors. Anne is a Honorary Consultant, on call to advise crews from South East air ambulances in moments of uncertainty on scene. Anne is also a (resting) Trustee of the London's Air Ambulance charity.

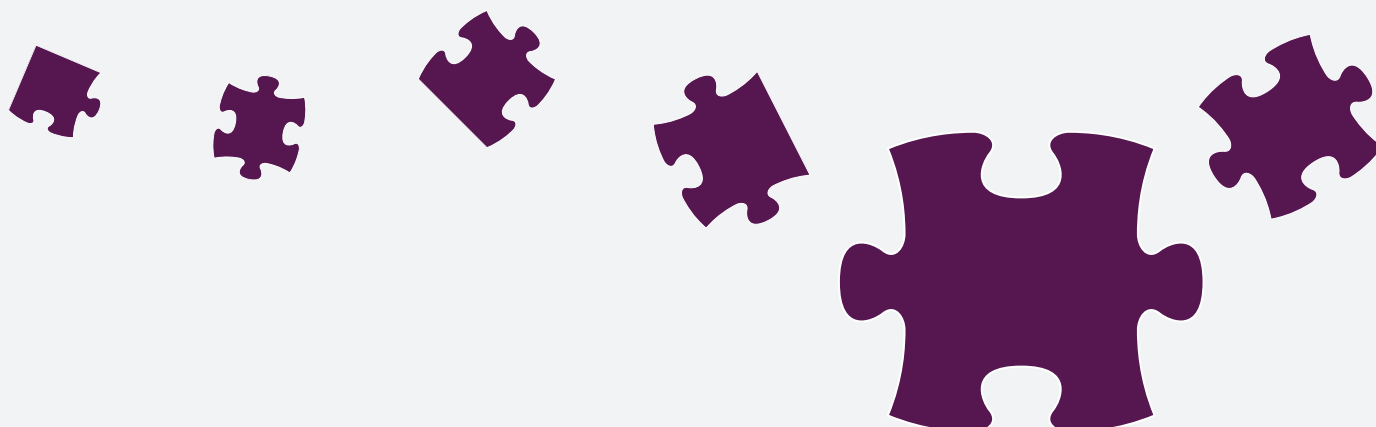
Dr Anne Weaver led the blood on board initiative that brought pre-hospital blood transfusion from battle fields to civilian medicine in March 2012. Not only was a precedent set in London, Anne also led the development of protocols on efficient blood storage and safe administration of blood transfusion in the pre-hospital environment, making this innovation available to any air ambulance, aspiring to deliver the same standards of care.



**Dr Matthew Crocker**  
**Consultant Neurosurgeon &**  
**Clinical Lead for Neurosurgery**  
**St Georges University Hospitals**

Matthew Crocker graduated from New College, Oxford and trained in neurosurgery in South London from 2004-2012. He studied malignant brain tumours and cerebral blood flow from 2008-2010 as the McKissock lecturer at St Georges University and was awarded the Norman Dott medal for the most outstanding performance in the FRCS(SN) examination in 2011. He was awarded the Marjorie Newsome Travelling Fellowship in 2011 to The Barrow Neurological Institute, Arizona.

He is a consultant neurosurgeon and director of neurosurgery at the Atkinson Morley Wing, St Georges University Hospitals NHS Foundation Trust in South West London. He holds clinical lead positions in neurotrauma, undergraduate teaching and metastatic spinal cord compression and is the chair of the regional spine MDT. He has a full clinical neurosurgical practice with subspecialist interests in cranial vascular surgery and all areas of spinal surgery including tumours, trauma, intradural and complex degenerative work as well as deformity.





**Dr Mark Salter**  
**Consultant Psychiatrist**  
**East London Foundation NHS Trust**

Mark qualified in East London in 1983 and after working for two years as an anaesthetist he began training as a psychiatrist. In 1994 he became a Consultant in Adult General Psychiatry at St Bartholomew's and the Homerton Hospitals in London and, apart from a year working in the Marlborough Sounds, New Zealand, he has remained in this post to the present.

Mark is presently responsible for the provision of adult general psychiatric care in a Primary Care setting, in an inner city area which is ever more varied in terms of psychopathology and socio-cultural make-up. His day-to-day work routinely brings him into clinical contact with psychiatric disorders including anxiety, depression, personality disorders, schizophrenia, PTSD and organic cerebral syndromes including dementia and head injury. His professional areas of special interests include the ethics of psychiatry, the psychopathology of trauma, substance misuse and community care.

Because of his interests in ethics, mental illness and trauma, he has for the past 18 years run a fortnightly medico-legal clinic in parallel to my Adult General practice. This work has dealt with diverse topics of testamentary capacity, issues of causation in post traumatic stress and other reactive disorders, unexplained pain and other 'physical' conditions, as well as disorders such as psychotic illnesses, substance misuse and personality disorders.

He has an interest in the media representation of psychiatric illness and the role of serious incident enquires in the management of homicides and suicides committed by the mentally ill. Mark is an adviser to the Mental Health Charity MIND and the Jewish Association for Mentally Ill (JAMI). He has published numerous articles and letters on the field of substance misuse, schizophrenia, risk and untowardness, mental health legislation and community psychiatry. In 2008, he published *Outdoor Psychiatry*, an innovative handbook on community psychiatric care.



**Henry Whitcomb QC**  
**One Crown Row**

Henry Witcomb QC has a practice specialising in clinical negligence, personal injury, public authority liability and inquest representation.

In clinical negligence, he has particular expertise in dealing with cases involving wrongful death and birth-related catastrophic injury. His personal injury work has focused on catastrophic spinal and brain injuries. In addition he has been involved in several multi-party actions.



**Lizanne Gumbel QC**  
**One Crown Office Row**

Lizanne Gumbel's work mainly involves clinical negligence and personal injury claims for catastrophically injured Claimants. She also has extensive experience in multi-party actions arising out of child abuse in institutions. In 2016, Lizanne was awarded both the Legal 500 Personal Injury and Clinical Negligence Silk of the Year and the Chambers and Partners Clinical Negligence Silk of the Year. Her current cases of note include representing a number of women who were wrongly diagnosed by breast cancer surgeon Mr Ian Paterson.



# Travel Directions

13th July 2017 | One Great George Street, Westminster, London

# MY LIFE; MY INJURY

A focus on neurological injury getting rehabilitation in place and beyond.

## By London Underground

Both Westminster (Exit 6) on the District, Circle and Jubilee lines, and St James's Park on the District and Circle lines, are just 5 minutes walk away. For more information, visit the Transport for London website.

## Walking Directions from Westminster Underground (exit 6)

When you arrive at the top of the stairs you will be on Whitehall. Turn around (as if you were to walk back down the stairs) you are now facing Parliament Square. Walk around to the right onto Great George Street until you come to two sets of traffic lights. Cross over both and continue walking straight down Great George Street for about 1 minute. One Great George Street is the last building on the corner of Great George Street and Storey's Gate. The building is also the home of the Institution of Civil Engineers.

## By Rail

London's mainline stations at Waterloo, Victoria and Charing Cross are minutes away by foot or by Underground. For further information visit the National Rail website.

## By Bus

Numerous bus routes pass within a 1-2 minute walk of One Great George Street. Bus routes stopping near Parliament Square include: 3, 11, 12, 24, 53, 87, 88, 148, 159, 211 and 453. For further information visit the Transport for London website.

## By Bicycle

Local bicycle information can be found on the Westminster City Council website. The nearest TFL bike hire docking station is located just opposite

the building on Storey's Gate. Click on the Cycle for hire website and type in our post code SW1P 3AA. If your bike folds our cloak room can hold approximately 5 bikes at one time.

## GPS co-ordinates

Main entrance – 51 30.0822 N and 0 07.7500 W and Princes Mews – 51 30.0420 N and 0 07.7185 W

## By Car

The nearest car parks provided by Q-Park are located in Abingdon Street and on the south side of Trafalgar Square. Limited meter parking is also available in and around adjacent streets.

## Disabled Parking

The nearest Blue Badge disabled parking bay is located on Matthew Parker Street (drive down Storey's Gate to the west of the venue and take the second right). Alternatively, a little further away, there are bays on Old Queen Street and Queen Anne's Gate. These Blue Badge bays offer free parking for up to 4 hours between 08.30 and 18.30 Mon-Fri and unlimited parking at any other time. Please see Westminster Council's website for further information.

## Congestion Charge

One Great George Street lies within the charging area. For more information, including charges, visit the Transport for London website.

## By River

A River Bus Service runs every 20 minutes during peak time from Embankment to Woolwich Arsenal; the nearest pier to us is the London Eye.



# NeuroHealth

Case Management Services



**Case Managers need to be all things to all people, which is why we ensure our Case Managers are adaptable problem solvers, able to communicate on many different levels.**

As every client and situation is different, they will require a different approach and set of skills which can only be met by well rounded professionals who have the resources to seek out the solutions to problems.

## **Our Case Managers:**

- Have deliberately small caseloads so that they can devote the time required to supporting their clients effectively
- Are reviewed periodically against BABIOM (British Association of Brain Injury Case Managers) Competencies to aid in their continual development
- Receive regular clinical support and supervision to ensure case management remains “on track” and proactive
- Receive regular training from legal and clinical professionals

- Have 100% of their case management documentation stringently audited each month for quality assurance
- Have exceptional problem solving, people and life skills, in addition to clinical experience
- Undertake regular training relevant to their role and maintain relevant professional registrations
- Are supported by a team of experienced Assistant Case Managers and an administrative team so that they can focus their skills on where they are needed most
- Prepare, and work within, an agreed budget which is set every month

**For more information on how we can help you or your clients, please contact us:**

**T: 0208 675 1210**

**E: [info@nhcm.co.uk](mailto:info@nhcm.co.uk)**

**W: [www.nhcm.co.uk](http://www.nhcm.co.uk)**

**Now Recruiting!** Due to continued growth we are recruiting for Case Managers experienced in neurological injuries, to cover London, the Home Counties and the South. For more details please email: [williamlidstone@nhcm.co.uk](mailto:williamlidstone@nhcm.co.uk)



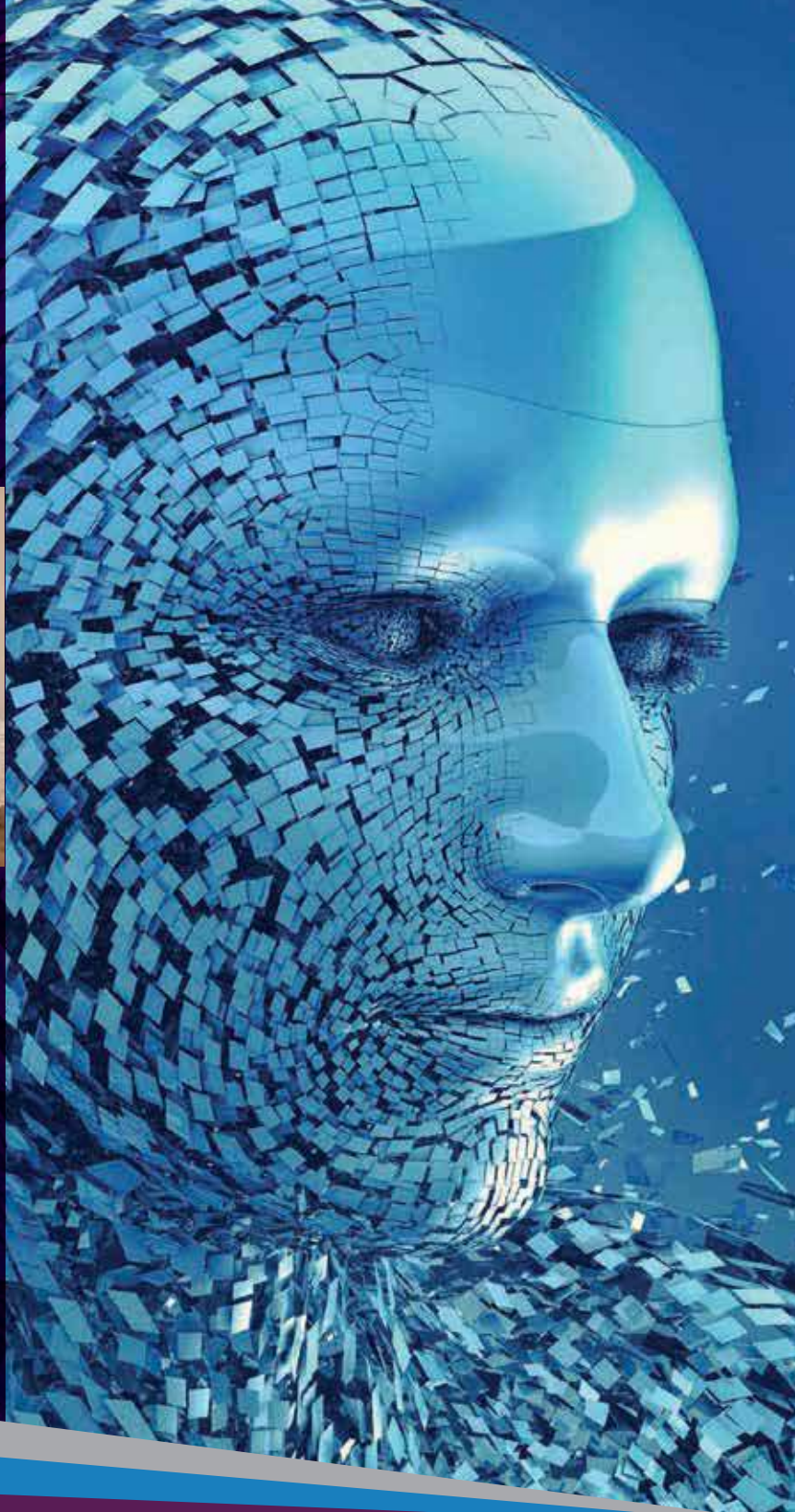
*"I would like to congratulate you and your team for such a speedy and favourable outcome. It has been great knowing you as a person and professional"*

Clients Parents



*"They go out on a limb, they stand up and are counted. They are innovative."*

Chambers 2016



**fieldfisher**

**0800 358 3848**

[jill.greenfield@fieldfisher.com](mailto:jill.greenfield@fieldfisher.com)

[www.fieldfisher.com/personalinjury](http://www.fieldfisher.com/personalinjury)

**Leading Brain  
Injury Specialists**

